

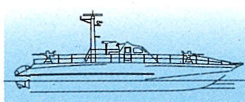
## SPLIT HOPPER BARGE



Fully welded steel construction with hermetically closed buoyancy tanks.  
Each part of hull self floating in upright position.

25 mm thick hopper plating with labyrinth type sealing. Opening and closing by extra strong hydraulically operated rams powered by deck mounted diesel engine. Remote opening and closing of hopper while towing optional.

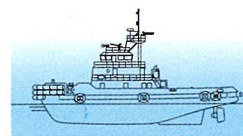
Length Overall	: 39,80 M
Beam (MLD)	: 7,50 M
Depth	: 2,50 M
Draft (LOADED)	: 2,00 M
Hopper Capacity	: 175,00 Cu. M

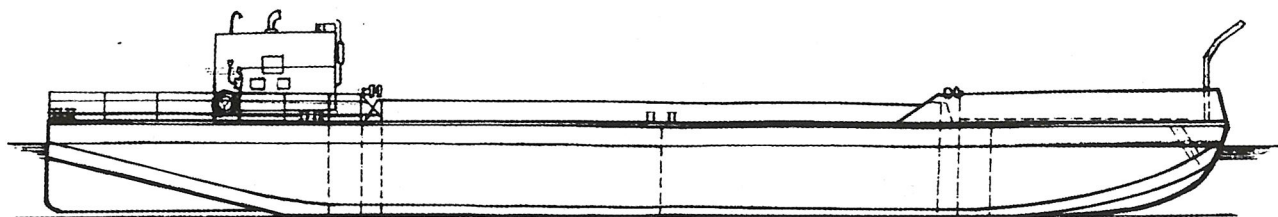


**Colombo Dockyard Limited**  
Ship Builders, Repairers & Heavy Engineers

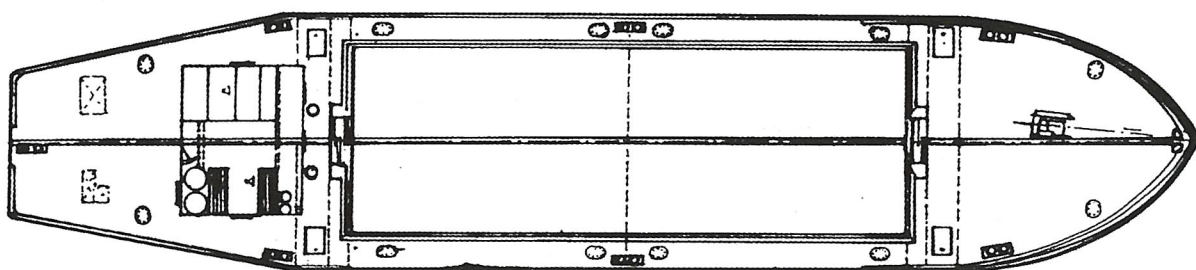


Port of Colombo, Sri Lanka. Tel. +94 11 2522461-5, Fax. +94 11 2471335/ 2446441

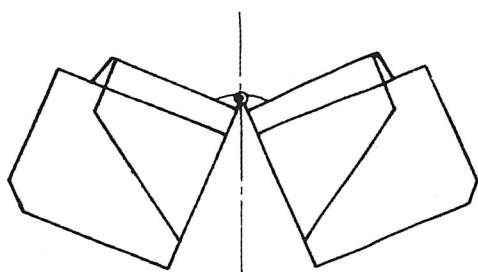




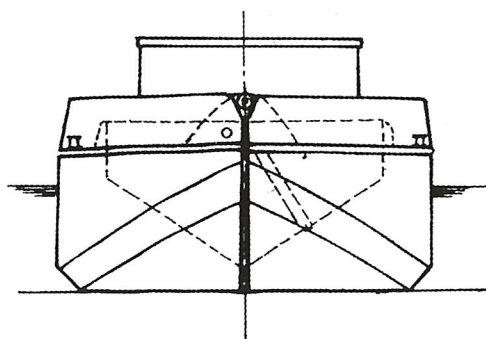
**PROFILE**



**MAIN DECK**



**HOPPER AT OPENED POSITION**



**FRONT VIEW**