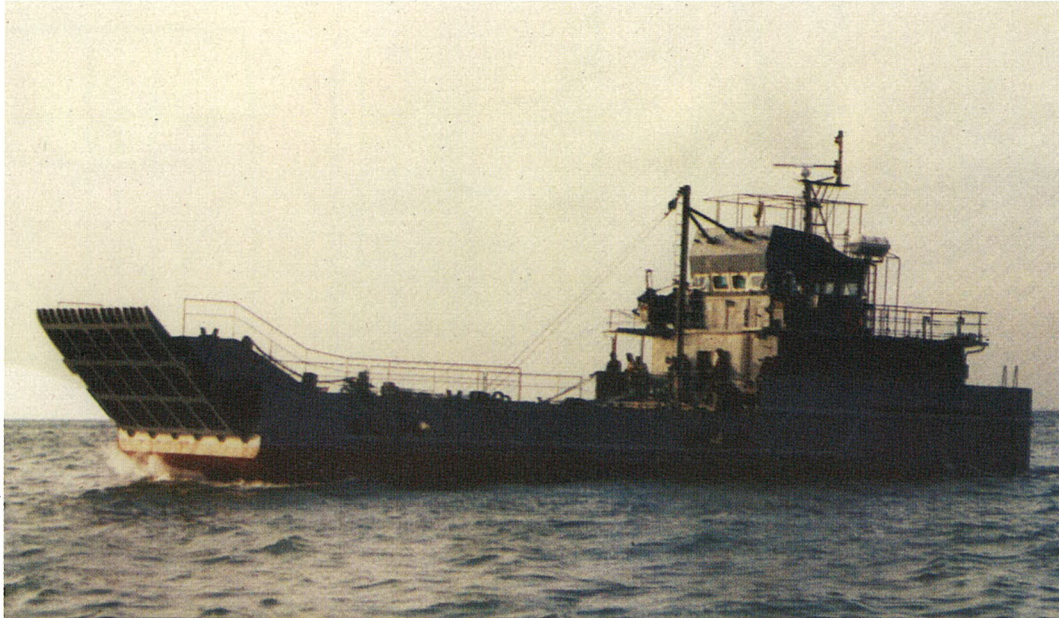


29 METRE LANDING CRAFT

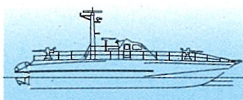


The vessel has been well proven as an efficient Landing craft capable of carrying battle tanks and heavy transport, deck cargo, troops, fuel and fresh water.

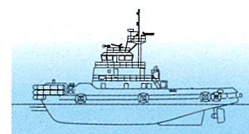
Deck Cargo : 100 tonnes or 2 battle tanks.

Hull and Superstructure is of fully welded steel construction, & is equipped with Comprehensive Communication, navigation equipment. Accommodation and Wheel House areas are air conditioned. Maintenance is reduced to a minimum by simple layout, use of high quality material and excellent workmanship.

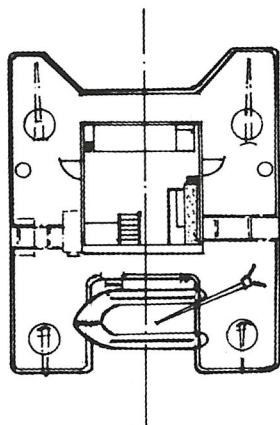
Length Overall	: 34,00 M
Length of Hull	: 29,50 M
Beam (MLD)	: 8,00 M
Depth	: 2,00 M
Draft	: 1,50 M
Complement	: Officers 2, Senior Sailors 2, Sailors 8
Propulsion	: 2 x CATERPILLAR 3408 B engines driving two Fixed Pitch propellers installed in steerable nozzles
Maximum Continuous Speed	: 10 knots
Endurance	: In excess of 1200 nm
Classification	: LR + 100 A1, LMC (Coastal Service)
Weapon outfit	: 2 x 20 mm Light Naval Guns 2 x 12.5 mm Light Machine Guns



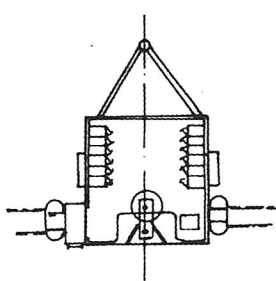
Colombo Dockyard Limited
Ship Builders, Repairers & Heavy Engineers



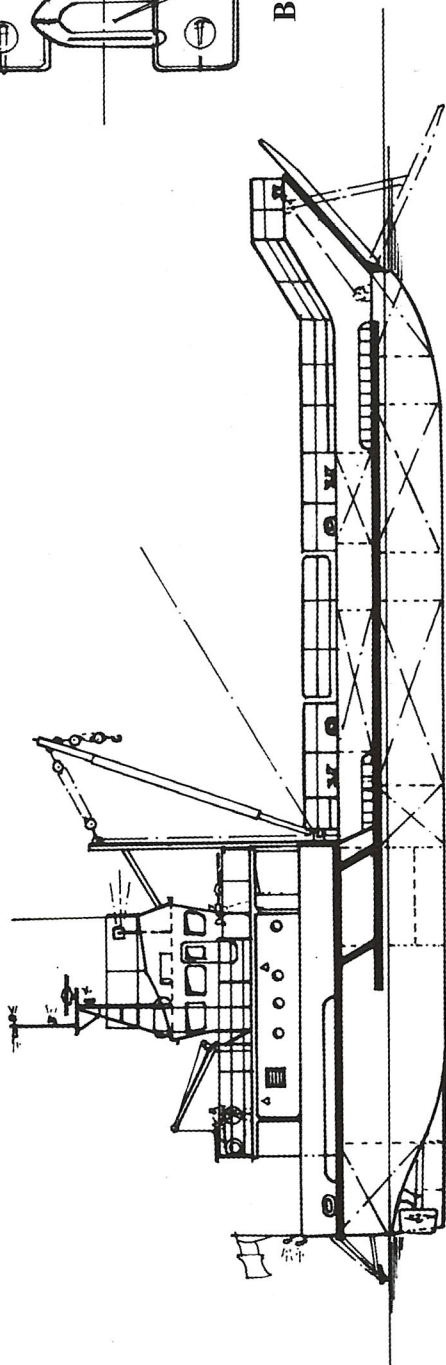
Port of Colombo, Sri Lanka. Tel. +94 11 2522461-5, Fax. +94 11 2471335/ 2446441



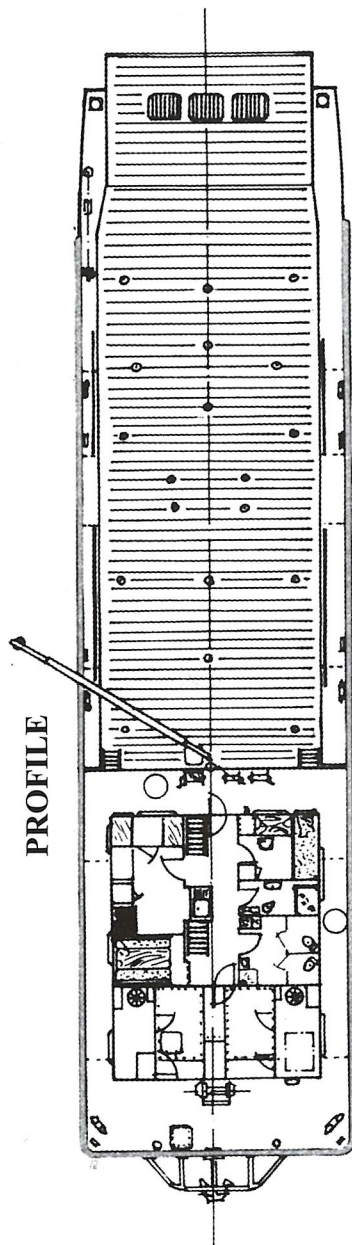
BRIDGE DECK



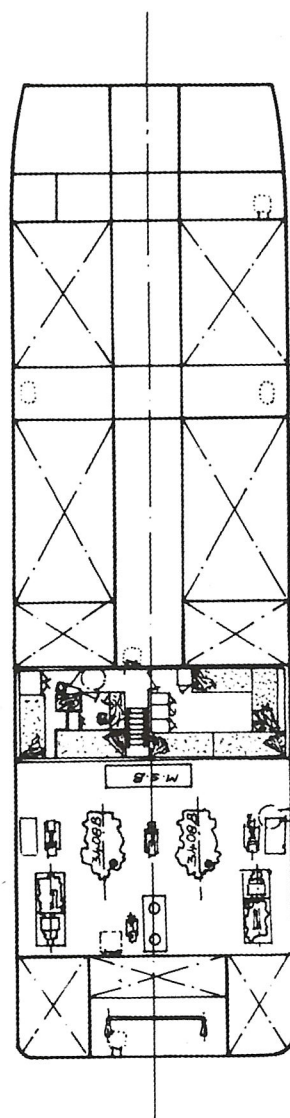
WHEEL HOUSE TOP



PROFILE



MAIN DECK



UNDER DECK