

20 TON BOLLARD PULL BERTHING TUG



General

Yard Nos. : 154-155
Delivery Dates : 1st - 18/05/2001
 : 2nd - 06/07/2001
Basic Functions : Towing & Berthing of
 Ships
Classification : LR + 100 A1+LMC
 Harbour Tug
 (Sri Lanka Coastal
 Waters)

Dimensions

Length Overall : 30.50 M
Beam Mld. : 9.60 M
Depth : 4.48 M
Draught Max. : 3.50 M
Gross Tonnage : 311 Tons

Performance

Bollard Pull
Ahead Bollard Pull : In excess of 20 Tons
Astern Bollard Pull : In excess of 15 Tons

Speed : 10 Knots
Endurance : 1500 Nm

Fire Fighting Capabilities

External Fire Pump : Counterfire 202 FP 3-E
 Pump Volvo Penta TMD
 102 Engine

Tank Capacities

Fuel Oil : 60 cbm
Fresh Water : 33 cbm

Main Propulsion Machinery

Main Engines : 2 x WARTSILA 4L 20
Propulsion : Schottle SRP 550 FP Stern
 : Azimuth Thrusters

Auxiliary Machinery

Main Generators : 2 x YANMAR 6 HAL 2- TN
Harbour Generators : 1 x YANMAR 4 CHL- TN

Deck Machinery

Anchor Windlass : JADEN
Towing Hook : MAMPAEY
Capstan : JADEN

Accommodation

Officers : 2 Officers
Crew : 14 Men

Navigation Equipment

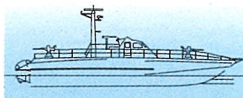
Radar : FURUNO 1942- MK2
Echo Sounder : FURUNO FCV- 581 L
EPIRB : MCMURDO 406
Magnetic Compass : TOKIMEC SH 165 A
GPS : FURUNO GP - 80
SART : SART - 9 GHZ

Communication Equipment

VHF Radio Telephone : FURUNO FM 8500/DSC
Public Address System : Furuno PA - 505 TK
Intercom : JRC 11 Branch
SSB : Furuno FS 1562 - 15

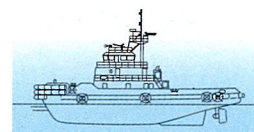
Owner

Sri Lanka Ports Authority

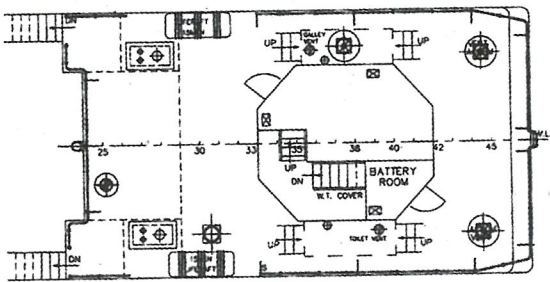


Colombo Dockyard Limited

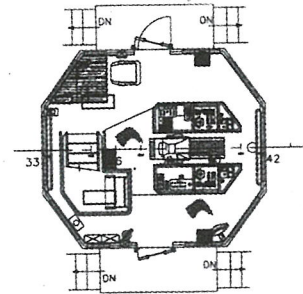
Ship Builders, Repairers & Heavy Engineers



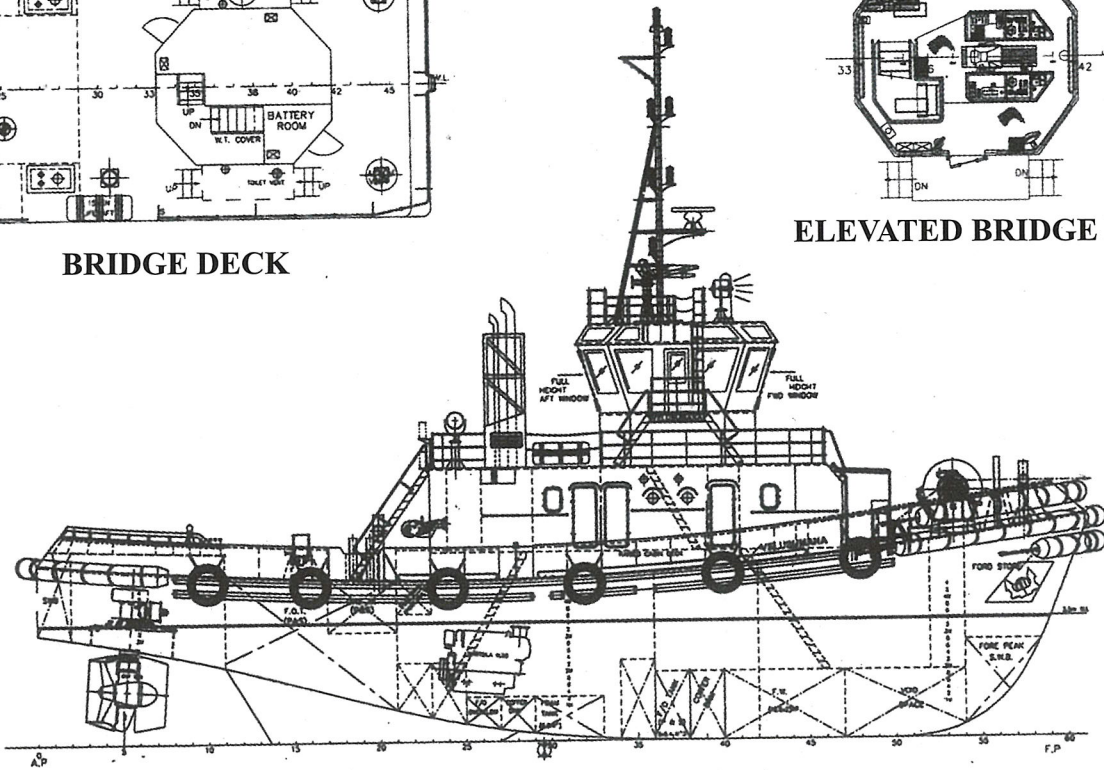
Port of Colombo, Sri Lanka. Tel. +94 11 2522461-5, Fax. +94 11 2471335/ 2446441



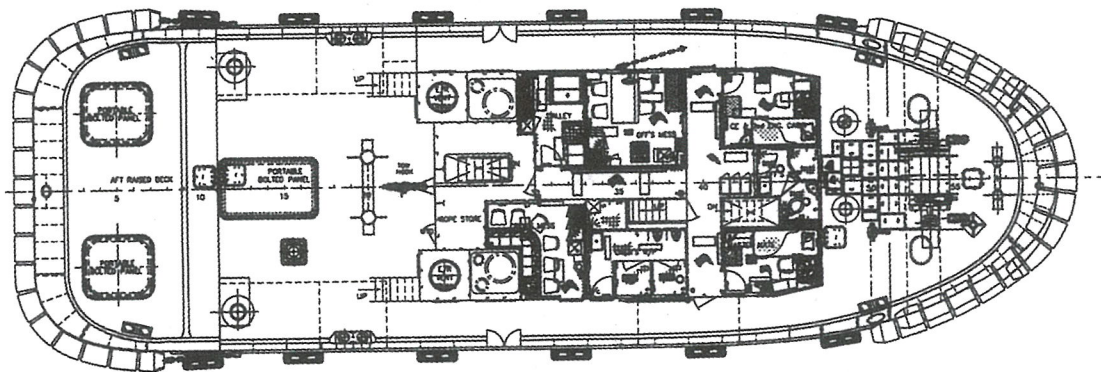
BRIDGE DECK



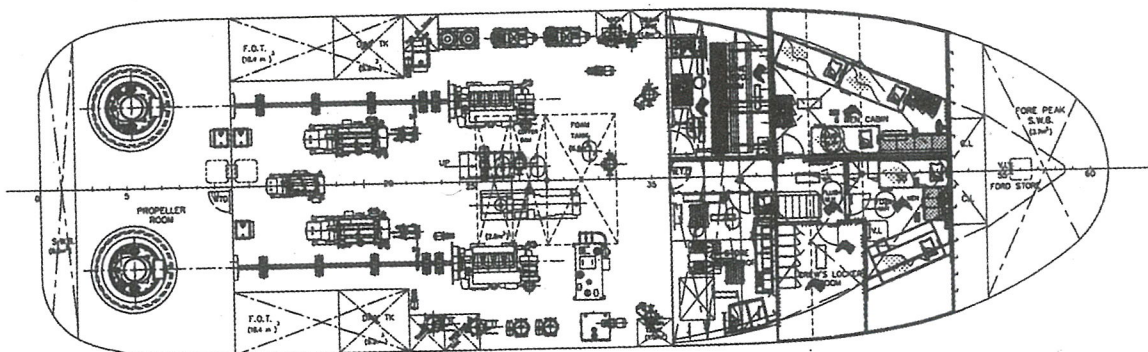
ELEVATED BRIDGE DECK



PROFILE



MAIN DECK



BELOW MAIN DECK