

26 M LANDING CRAFT



General

Yard No. : 145
Delivery Date : 19.11.1999
Basic Functions : Transporting Garbage
Layden Trucks from Malé
to Thilafushi Island

Dimensions

Length Overall : 31.00 M
Length of Hull : 26.00 M
Breadth Mld. : 8.00 M
Depth : 2.10 M
Draught Service : 1.20 M
Gross Tonnage : 108 Tons

Performance

Speed : 9.0 Knots
Endurance : 400 Nm plus

Tank Capacities

Fuel Oil : 13, 600 Ltrs
Fresh Water : 1200 Ltrs

Accommodation

No. of Bunks in Wheel House : 4 Bunks

Main Propulsion Machinery

Main Engines : CUMMINS NT 855M

Auxiliary Machinery

Generators : Perkins 3.1524

Deck Machinery

Kedge Anchor : JADEN

Navigation Equipment

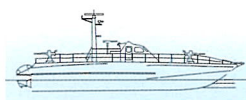
Compass : Cassen Plath

Communication Equipment

VHF Transreceiver : SAILOR RT 2048

Owner

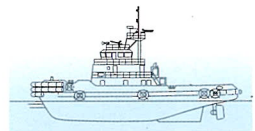
Ministry of Construction and Public Works,
Republic of Maldives

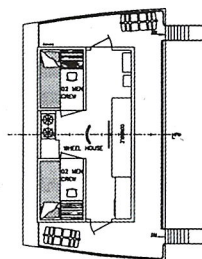


Colombo Dockyard Limited

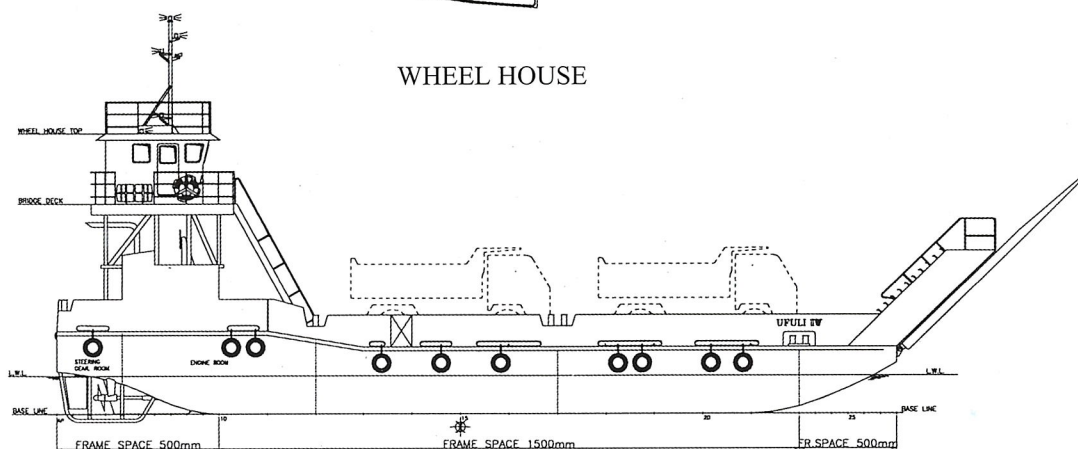
Ship Builders, Repairers & Heavy Engineers

Port of Colombo, Sri Lanka. Tel. +94 11 2522461-5, Fax. +94 11 2471335/ 2446441

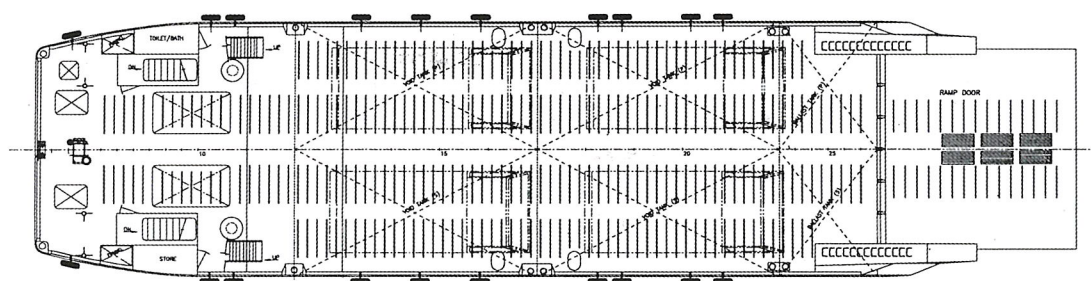




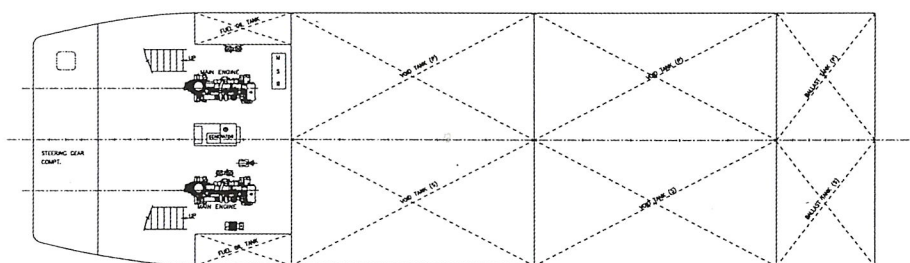
WHEEL HOUSE



PROFILE



VEHICLE DECK



UNDER DECK